

OUTLINE  
TROLLEY BASE - US. 13-E

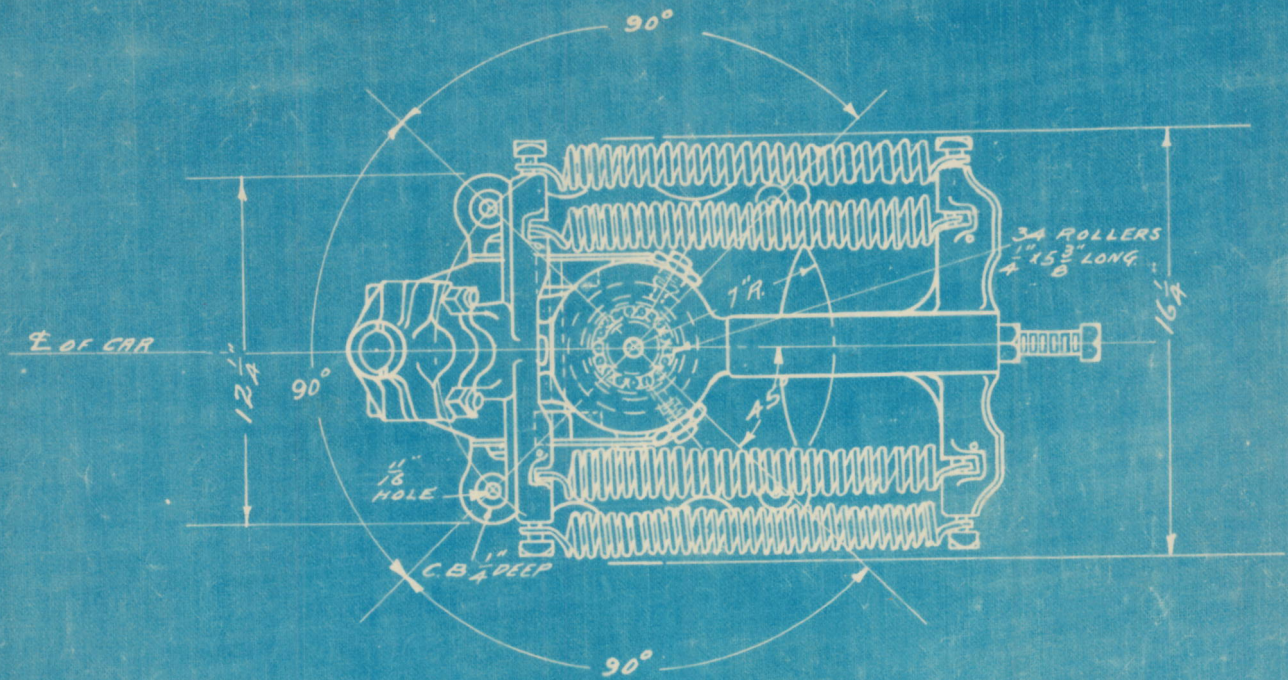
L.M.

DRAWN BY F.H. WALSH, OCT. 20, 22 INSPECTED BY J.F. BRADY, OCT. 27, 22

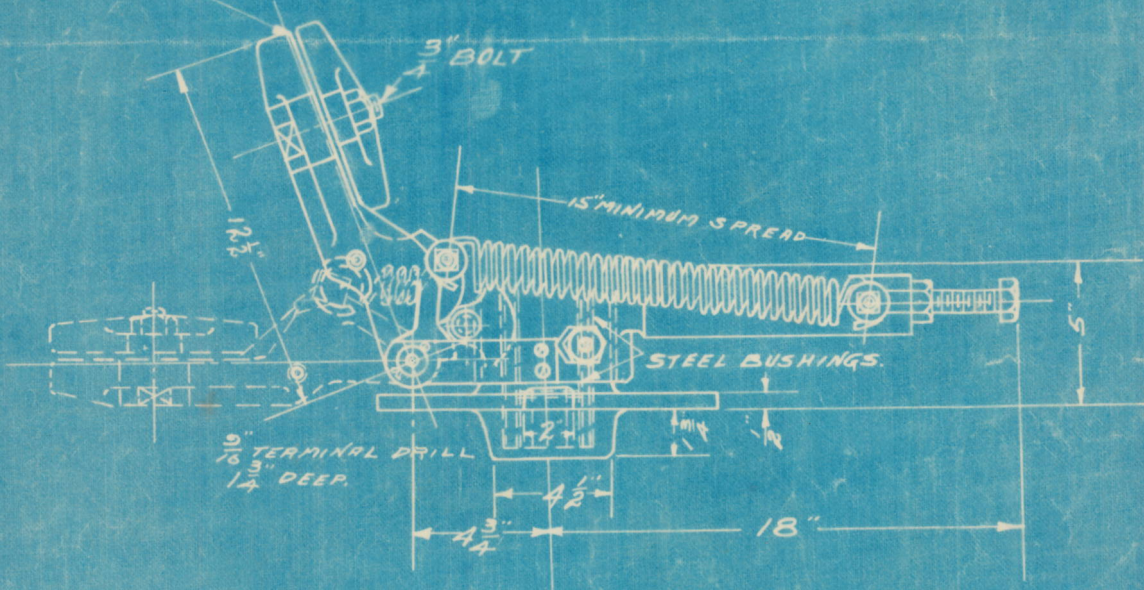
K-2154150

GENERAL ELECTRIC COMPANY

FF-449 5M 7-22-20



FOR 1 1/2" BUTT POLE



④ REVISED & RETRACED APR. 6 '21

# OUTLINE

U.S. 13-0 TROLLEY BASE

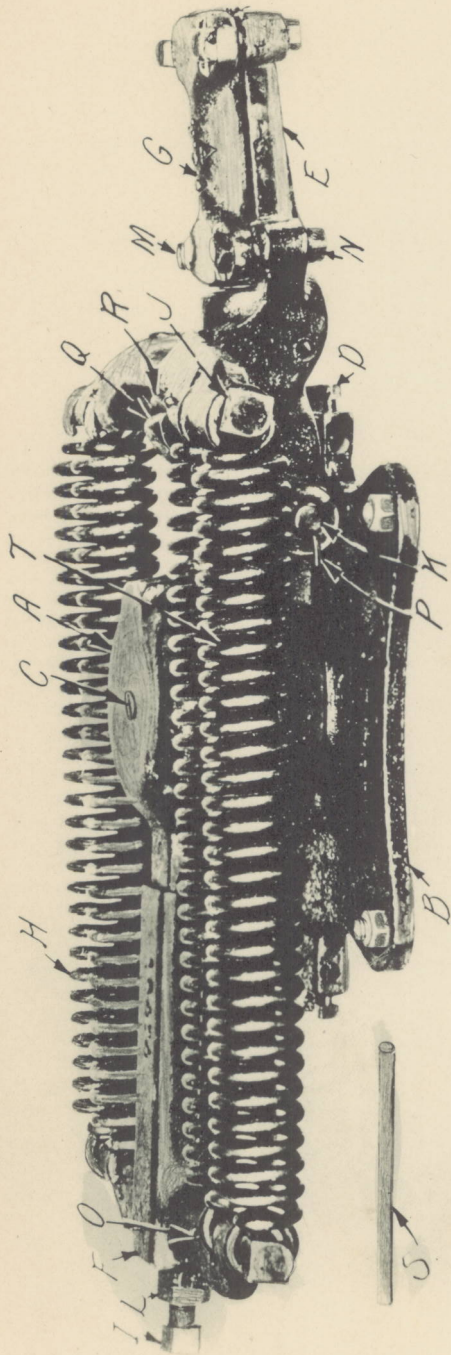
L.M.

DRAWN BY B. Wittman, Nov. 29, 1911... REINSPECTED BY J. F. Brady, April 6 '21.

K849671

GENERAL ELECTRIC COMPANY

FF-449 5M 7-22-20



- A Bearing Cap, complete with Stud, Roller and Screw
- B Bearing Base
- C Cat. No. 9699
- D Set Screw ( $\frac{3}{8}$ "-16,  $\frac{3}{4}$ " Sq. H.)
- E Pole Socket
- F Spring Adjusting Bracket
- G Cap for Pole Socket
- H Spring
- A Buffer Spring

- I Screw ( $\frac{3}{4}$ "-10, 6" Hex. H)
- J Bolt (Standard Blank,  $\frac{5}{8}$ " Dia  $3\frac{3}{8}$ " long, Drilled for Spring Cotter)
- K Pin for Bearing Cap
- L Nut  $\frac{3}{4}$ "-10,  $\frac{3}{8}$ " Hex.
- M Bolt ( $\frac{1}{2}$ "-13, 2  $\frac{3}{8}$ " Sq. H.)
- N Cat. No. 16325
- O Spring Cotter ( $\frac{3}{16}$ " x  $1\frac{5}{8}$ ")
- P Cat. No. 10064
- Q Bolt ( $\frac{3}{4}$ "-10,  $3\frac{3}{4}$ " Sq. H.)
- S Roller
- T Spl. Set Screw

In Ordering, give name of part, or Cat. No. reference letter and photograph number (303186)

303186

Type US-13, Form A Trolley

THIS MARGIN IS RESERVED FOR BINDING.

IF SHEET IS READ THIS WAY (HORIZONTAL) THIS MUST BE  
IF SHEET IS READ THE OTHER WAY (VERTICALLY) THIS MUST BE LEFT-HAND SIDE.

13  
12  
11  
10  
9  
8  
7  
6  
5  
4  
3  
2  
0 5 10 15 20 25 30 35 40

HEIGHT IN FEET TO WHEEL GROOVE FROM BOTTOM OF STAND

LOAD IN POUNDS.

### PRESSURE CURVE

US-13-D TROLLEY BASE -  
WITH 14" POLE AND  
FORMS 12 HARP & 60 B  
WHEEL.

LOAD REQUIRED TO ROTATE  
TROLLEY BASE FROM TROLLEY  
WHEEL = 1 LB., AT A HEIGHT  
OF 2" FROM BOTTOM OF FOOT

C-48177  
S.L.W. JUNE 28 1917